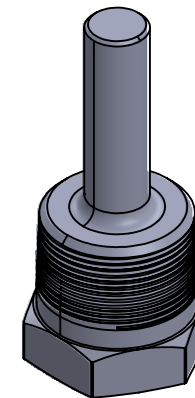
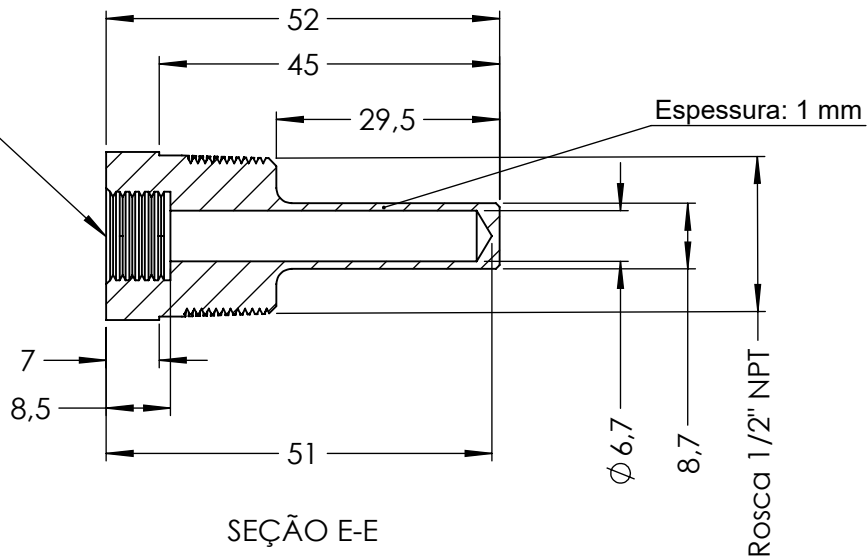
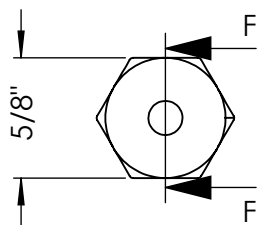


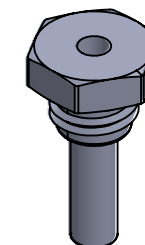
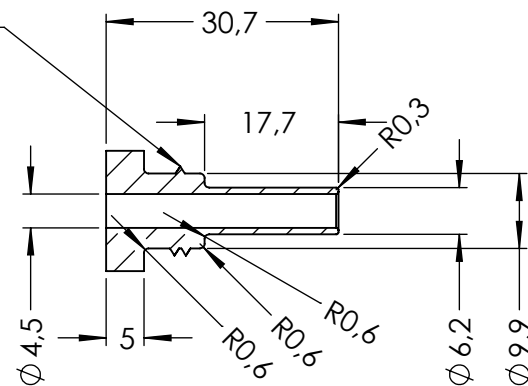
Rosca Interna: M12 x 1,5



SEÇÃO E-E



Rosca Externa: M12 x 1,5



SEÇÃO F-F



www.fullgauge.com
phone : 55 51 3475 3308

DESCRIÇÃO: POÇO TERM. 30 mm ROSCA 1/2" NPT SB-70

CÓDIGO: 17498

REV.: 03

DATA: 10/09/2019

AMOSTRA: ---

DESIGNER: RICARDO LAUER

REVISÃO:

ESCALA: 1:1

UNID: mm

TOLERÂNCIA: ±0,2

DESENHISTA: RICARDO LAUER

REVISÃO:

FOLHA: A4

NÚMERO DA FOLHA: 1

QUANTIDADE CAVIDADES: ---

REF. MATERIAL: Alumínio (acabamento anodizado)

COR: ---

MATERIAL: INDICADO

CÓDIGO MOLDE: ---

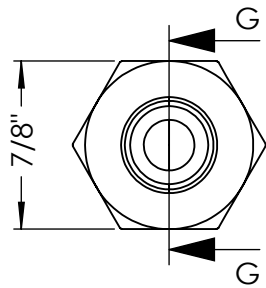
ALTERAÇÃO: Alterado o comprimento da porca: de 13 para 30,7 mm.

CERTIFICAÇÃO: ---

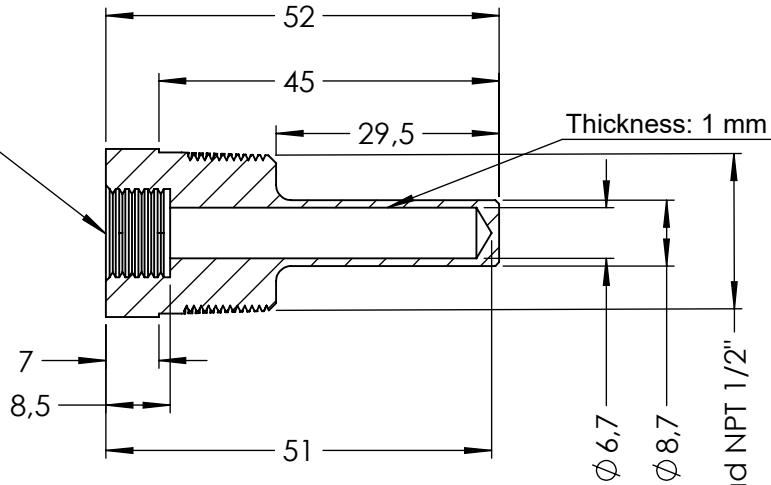


PESO: ---

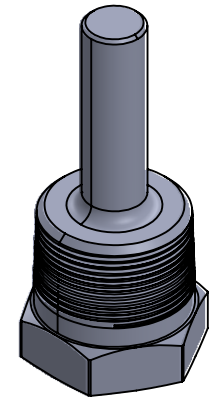
A



Internal thread: M12 x 1,5

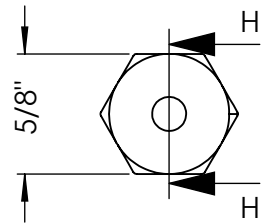


Thread NPT 1/2"

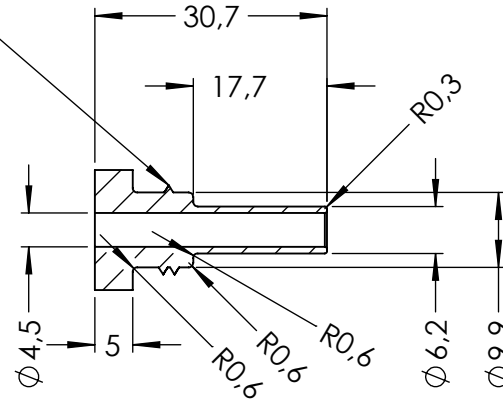


B

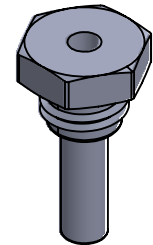
C



External thread: M12 x 1,5



SEÇÃO H-H
ESCALA 1 : 1



D



www.fullgauge.com
phone : 55 51 3475 3308

DESCRIPTION: THERMOWELL 30 mm THREAD 1/2" NPT SB-70	CODE: 17498	REV.: 03	DATA: 10/09/2019	AMOSTRA: ---
DESIGNER: RICARDO LAUER	REVIEW:	SCALE: 1:1	UNIT: mm	TOLERANCE: ±0,2
DRAWER: RICARDO LAUER	REVIEW:	SHEET: A4	SHEET NUMBER: 2	QUANTITY CAVITIES: ---
REF. MATERIAL: Aluminium (anodized finish)	COLOR: ---	MATERIAL: Indicated		MOLD CODE: ---
ALTERATION: Changed the length of the nut: from 13 to 30,7mm.		CERTIFICATION: ---		WEIGHT: ---